

VISIONS

THE EXECUTIVES MAGAZINE

THE VALLEY SUPPORT GROUP FOR THE LOS ANGELES JEWISH HOME



The Executives 10th Annual

 ***GOLF CLASSIC***

Benefitting the Los Angeles Jewish Home

Sponsored by: Heritage Provider Network

Monday, September 23, 2013
At TPC Valencia

Awards Sponsor:



Mission Community Hospital®

Compassionate Healthcare. Quality Healthcare.

The Executives thank

**The Heritage Provider Network
and Dick Merkin**

**for their generous sponsorship
of the 10th Annual Golf Classic.**

**You truly helped make
this event a success!!**

Executive Committee

Rich Marcus, President
Ira Halpern, Executive Vice President
Jonathan E. Hartman,
Vice President, Development
Todd Rubinstein,
Vice President, Membership
Robb Greenspan,
Vice President, Special Events
Bruce Kaufman,
Vice President, Programming
Joel Volk, Vice President, Communications
Gary Krausz, Treasurer
Vicki Sternfeld, Recording Secretary
Jacques Soriano,* Immediate Past President
Sasha Ezros, Co-Chair, The Young Executives
Britney Greenberg,
Co-Chair, The Young Executives
Matt Weiss, Co-Chair, The Young Executives

Board of Directors

Michael Abraham
Steven J. Cohen
Diana Dabach
Jeff Ebenstein
Councilman Mitchell Englander
Ron Feder
David Feldman
Carole Flam
Rick Flam
Fred Gaines*
Bud Golditch
Arthur A. Greenberg*
Earl Greinetz
Michael J. Grobstein*
Ira Halpern
Richard Katz
Mel Kohn
Stuart Lorch
Brandon Matloff
Paul Meshekov
Arthur Pfefferman
Gary A. Plotkin*
Allen Rische
Allan Sarver
Jack Schlaifer*
Ronald P. Slates
Fred Solomon
Harvey Turell
Sharon J. Udkoff, CPA
Barri Worth Girvan
Keith Todd Zimmet, Esq.
Robert Zuckerman D.C.
Councilman Dennis P. Zine*

* Past President/Life Member

Advisory Board

Jill Banks Barad
Stewart Bloom
Marsha Calig
Martin M. Cooper**
Kenneth L. Goldman, CPA
Steve Greenwood, Esq.
Eric Kingsley
Howard M. Loeb
Wendy Moskal
I. Allan Oberman, Esq.
Francine Oschin
Karyn Palmer
Betsey Roberts
Janice Ross
Dr. Sy Silverstein
Jean Strauber
Phyllis Winger

The Executives

Manager: Saul Korin
Staff: Cheryl Kater
Los Angeles Jewish Home
7150 Tampa Avenue
Reseda, CA 91335
(818) 774-3331
(818) 342-0881 fax
executives@jha.org
www.TheExecutives.org

PRESIDENT'S Message



Dear Friends,

\$90,000!!

\$90,000 is what The Executives Golf Classic raised. Net. That is a lot of money. To all of you who golfed, donated, auctioned, or sponsored. We truly could not have done it without you.

\$90,000 to support the 1,000 residents of the Los Angeles Jewish Home. You also supported 3,300 seniors served through the Brandman Centers for Senior Care, the Ida Kayne Transitional Care Unit,

Skirball Hospice and Palliative Care and more.

In its 101st year, the Jewish Home continues to grow and strive to support more seniors in more places around Los Angeles. As we prepare to build the Gonda Healthy Aging Westside Campus, our tradition of excellent care for seniors will expand to a resident location on the Westside with 200 more beds for senior care. We will continue to add life to years and years to life.

It has been an honor to serve as President of The Executives. The highlights were 100 for 100 and Circle of Life honoring Martini, Iosue & Akpovi, CPAs. I would like to thank The Executives committee and board who have worked as a team to raise money and awareness for the residents of the Jewish Home. And to all of you who have donated, volunteered and supported the Jewish Home, thank you!

Ira Halpern, incoming President, has been working hard to hit the ground running. I wish him and his team great success in building and growing The Executives.

Again, thank you,

– Rich Marcus, President

CONTENTS

Resident's Profile: Josephine "Jo" Rudolph	3
The Young Executives	4
17th Annual Circle of Life	5
Breakfast and Lunch Programs	6
Residents of the Los Angeles Jewish Home	9
The Executives Story	11
Thank You	12
Golf Tournament Photos	13
Golf Tournament Sponsor Ads	22
Tributes	39
Upcoming Events	Back

The Executives is the San Fernando Valley
Support Group for The Los Angeles Jewish Home
www.TheExecutives.org





JOSEPHINE “JO” RUDOLPH

Resident Profile

Jo Rudolph has been a resident of the Home since 2005. Known for her intellect and forthright personality, *Jewish Home News* recently sat down with Jo to learn a little more about what makes her tick.

When and where were you born?

February 6, 1917 in Chicago.

What is your idea of perfect happiness?

Being outside on a beautiful day,

and having the ability to see and appreciate the beauty.

What is the trait you most admire in yourself?

I love to learn about what’s going on in the world today.

What is the trait you most admire in others?

Being smart. I look at some of today’s women and they have accomplished so much. I admire them.

Which person, living or dead, do you most admire?

Steve Jobs. He had a visionary brain. What would things be like if it wasn’t for everything he created?

What or who is the greatest love of your life?

My wonderful husband, Herb. We had a good marriage that lasted for over 70 years. We always had enough and helped our kids and others.

When and where were you happiest?

In the early years of my marriage. We had a beautiful wedding. Times were bad economically, but my dad – he was wonderful – said, “Josephine, if you want it, we will do it.” There were three rabbis! I continued to work for five years after Herb and I married, as an executive secretary at Spiegel, Inc. It was hard, but I loved it!

What do you consider your greatest achievement?

Being who I am – interested in and involved with the world, and willing and able to speak up for myself and others.

What is the one thing you would change if you could?

I wish I had gone to college after high school, rather than going to work.

What is your favorite hobby?

Reading. I’ve always felt it you read enough and enjoy it and there’s diversity in what you read, you can accomplish almost a college education!

What is it that you like most?

People.

What are your favorite words to live by?

If the ethics and morals of the Ten Commandments became a way of life, we would have it all.



THE YOUNG EXECUTIVES

By: Alexander "Sasha" Ezros

You asked for it and we delivered. The Young Executives are back in force and rejuvenated for an exciting year ahead of us. Recently the YE's hosted a number of successful events including a Mystery Trip scouring the unknown around our beautiful city, a night at an Executives Speakeasy with classic cocktails and a live jazz band, Dinner in the Sukkah at the Jewish Home, and our latest wine event held on a sunny Sunday afternoon at Malibu & Vine. All of these events were at capacity or beyond our expectations. A big thank you for all the support we have received from YE members, The Executives, the Jewish Home, and our community!

To keep the momentum rolling for The Young Executives and The Executives, the YE Committee have been working

progressively behind the scenes to continue to bring you great social events and opportunities to get to know the Home. The Young Executives committee meets monthly and are always held in an open-forum format to enhance involvement and idea generation. 2014 goals for YE's are to continue as we have with a robust committee, four exceptional social events, and reach a membership of 100 active participants.

Stay tuned for the latest and greatest. See you soon!

Follow The Young Executives on Facebook at:
<http://tinyurl.com/youngexecutives>



17TH ANNUAL CIRCLE OF LIFE HONORS MARTINI, IOSUE & AKPOVI, CERTIFIED PUBLIC ACCOUNTANTS!

.....

On June 2, 2013, The Executives honored the firm of Martini, Iosue & Akpovi CPAs with the 17th Annual Circle of Life Award for their commitment to The Executives and the Los Angeles Jewish Home. Steve Martini has been an Executive member since 2004. Mary Akpovi has been one of the foremost fundraisers on the Executives team of the Los Angeles Jewish Home's Walk of Ages. Martini, Iosue & Akpovi, CPAs supports many deserving charities including The Los Angeles Jewish Federation, AIPAC, Lighthouse Medical Missions, Exceptional Children's Foundation, AIDS Project Los Angeles, Fred Jordan Missions, and the San Fernando Valley Rescue Mission.

The night kicked off with a bourbon and scotch tasting sponsored by Arthur Greenberg and supplied by The Duke of Bourbon. Starlite Caterers showcased the diverse culinary background of the honorees including food from Nigeria, New York, Chicago and our own backyard. Enchanting music was performed by the talented Theeron Feemster (who has produced/performed with Michael Jackson, Jay Z and ZZ Ward). The honorees, Steve Martini, Don Iosue, Mary Akpovi and Chris Passmore were presented by Rabbi Paul Kipnes of Or Ami. The night concluded with comedian Elon Gold who helped everyone leave with a smile.

It was a wonderful night celebrating well-deserved honorees who support the Los Angeles Jewish Home.



Breakfast with The Executives

with featured speaker Professor Edward Leamer

Edward Leamer is the Chauncey J. Medberry Professor of Management, Professor of Economics and Professor of Statistics at UCLA. He received a B.A. degree in mathematics from Princeton University and a Ph.D. degree in economics and an M.A. degree in mathematics from the University of Michigan.

After serving as Assistant and Associate Professor at Harvard University he joined the University of California at Los Angeles in 1975 as Professor of Economics and served as Chair from 1983 to 1987. In 1990 he moved to the Anderson Graduate School of Management and was appointed to the Chauncey J. Medberry Chair.

Professor Leamer is a Fellow of the American Academy of Arts and Sciences, and a Fellow of the Econometric Society. He is currently serving as the Director of the UCLA/Anderson Business Forecast Project and Chief Economist of the Ceridian-UCLA Pulse of Commerce Index.

Dr. Leamer has published over 120 articles and 4 books, including his latest book *Macroeconomic Patterns and Stories*. His research papers in econometrics have been collected in *Sturdy Econometrics*, published in the Edward Elgar Series of *Economists of the 20th Century*.



Professor Edward Leamer
Chauncey J. Medberry
Professor of Management
Director, UCLA Anderson Forecast

Sequesters, Debt Ceilings, Obamacare: What Really Matters?

Thursday, January 9, 2014
7:00 - 7:30 am Social Time
7:30 - 9:00 am Program

El Caballero Country Club
18300 Tarzana Drive, Tarzana

Members: \$25 pre-registered/\$30 at the door
Non-Members: \$30 pre-registered/\$35 at the door

PLEASE RSVP NO LATER THAN FRIDAY, JANUARY 3RD

Please make # _____ reservations at \$25 per member or \$30 # _____ per non-member.

☐ Enclosed is my check payable to "The Executives/JHA" in the amount of \$ _____

☐ Please charge my credit card in the amount of \$ _____

Visa AMEX Mastercard CC# _____ Exp. Date: _____

Name: _____

Address: _____ City/Zip: _____

Telephone: _____ Email: _____



MARCH 2013 Breakfast

The March Breakfast featured Los Angeles County District Attorney, Jackie Lacey.



JULY 2013 Breakfast

Bob Schirn spoke about "What Really Happened to Marilyn Monroe and Other Stories from the LA District Attorney's Office"



SEPTEMBER 2013 Breakfast

Actor and author of "The Dangerous Animals Club," Stephen Tobolowky shared strange, but true, stories about love, life, and Hollywood.



NOVEMBER 2013 Breakfast

Laurie L. Levenson spoke about "High Profile Cases: Stand Your Ground and Much, Much More."

NETWORKING LUNCHES



The Executives Networking Group meets the 3rd Tuesday of every month. In November, we had our first Networking Lunch/Holiday Boutique with a record 80 people. Thank you to all the vendors and our members who "network with a heart!"

Photos by:

Jodye Alcon Photography

BECOME A CORPORATE SPONSOR

Sponsoring The Executives Breakfast Series is a great way to help your business and support the Jewish Home.

Corporate Emerald Circle: \$15,000

Emerald Circle Plaque on Executives Wall at the Jewish Home's Eisenberg Village • Feature Article in The Executives Visions Newsletter • Membership Privileges for 4 Individuals (from your business) • Complimentary attendance at all monthly programs for two for that calendar year • Sponsorship of 2014 Executives Breakfast Series • Sponsorship of 2014 Executives Networking Lunch series • Gold Page advertisement in the Circle of Life Gala tribute journal • Full Page advertisement in The Executives Golf Classic tribute journal • Two tickets to Circle of Life Gala • Participation in the annual Golf Classic for two

Corporate Silver Circle: \$5,000

Silver Circle Plaque on Executives Wall at the Jewish Home's Eisenberg Village • Special Recognition The Executives Visions Newsletter • Membership Privileges for 2 Individuals (from your business) • Complimentary attendance at up to 3 monthly programs for two for that calendar year • Sponsorship of 2014 Executives Breakfast Series • Sponsorship of 2014 Executives Networking Lunch series • White Page advertisement in the Circle of Life Gala tribute journal • Half Page advertisement in The Executives Golf Classic tribute journal • Two tickets to Circle of Life Gala or Participation in the annual Golf Classic for two

Corporate Patron: \$2,500

Special Recognition The Executives Visions Newsletter • Membership Privileges for 2 Individuals (from your business) • Complimentary attendance at up to 2 monthly programs for two for that calendar year • Sponsorship of 2014 Executives Breakfast Series • Half Page advertisement in the Circle of Life Gala tribute journal • Half Page advertisement in The Executives Golf Classic tribute journal

For further information please call The Executives office (818) 774-3331.

Our 2014 Breakfast Series Sponsors:



Sheila Gold Foundation

AT THE JEWISH HOME

"We add life to years and years to life."





THE EXECUTIVES STORY

In 1992, Earl Greinetz and a group of prominent Jewish business leaders in the San Fernando Valley recognized the need for support of the Los Angeles Jewish Home in the Valley. These pioneers created the Valley Jewish Business Leaders' Association, whose goal was to raise money for the Jewish Home, increase awareness of the Home in the local community, and to provide a place for its members to gather to share ideas and resources.

The founding officers of this organization – Michael Blue, Marty Cooper, Michael Grobstein, Howard Loeb, and Richard Nave – had a vision. Their group would become the organization to belong to if you lived or worked in the San Fernando Valley. Membership would be open to all who wished to join with other friendly people in support of the Jewish Home.

Over the past 20 years, only the name has changed. The VJBLA became The Executives; however, the vision has remained constant. Today, The Executives count many of the Valley's prominent business, civic and community leaders among their membership. Since their founding, The Executives has raised more than \$6 million for the Home. Members gather

for fun, exciting events and topical discussion forums. The Executives is the organization to belong to if you live or work in the San Fernando Valley.

The Executives' and The Young Executives' primary responsibility is to raise funds to support the Los Angeles Jewish Home to ensure there will always be a safe, healthy and loving environment for elderly Jewish women and men in Los Angeles. We are membership-based and comprised of more than 400 prominent business, community and political leaders. The Young Executives, created for members in their 20s and 30s, is a vital and important part of The Executives' organization and future. Through volunteering at the Home and sponsoring social and fundraising events, The Young Executives help to provide for our residents' immediate needs, while building future leadership skills. Together, our dynamic members strive to benefit the Home and its residents by achieving goals in a variety of creative, enlightening and fundraising efforts.

Through semi-monthly breakfast meetings, The Executives has become an icon in the Jewish community. Nearly 100 members and guests come to hear speakers and political

forums that enhance their awareness and understanding of timely, significant and thought-provoking issues.

The Executives' signature event is the annual Circle of Life Gala. The honorees selected for this award are chosen and recognized for their outstanding community achievements.

Spending time with our elderly and giving of ourselves is one of the greatest gifts we can offer. As the Jewish people have been commanded, "Honor Thy Father and Thy Mother." The Executives fulfill this commandment by raising funds and participating in resident activities such as our Bingo Night for the residents on the fourth Tuesday of each month.

The Executives produce many other special events during the year. They also participate in events put on by the Home, such as The Longest Day of Golf, Walk of Ages, and The Largest Mother's Day Celebration in the World. The success of these events and The Executives, as a group, is a direct result of hard-working, committed members who have become loyal and dedicated friends of the Jewish Home.

We gratefully acknowledge and thank this year's Golf Classic volunteers, sponsors, and everyone who donated items.

THANK YOU TO OUR SPONSORS:

Title Sponsor

HERITAGE
PROVIDER
NETWORK

Awards Dinner Sponsor



Breakfast Sponsor

MILKEN FAMILY
FOUNDATION

Lunch Sponsor



Golf Cart Sponsor

LYNN & DAVID FELDMAN

Drink Cart Sponsor

AMERICAN BUSINESS BANK®

Score Cards Sponsor



Closest to the Pin Contest Sponsor

SUSAN & IRA HALPERN

Hole-in-One Contest Sponsor



Longest Drive Contest Sponsor

GARY MINTZ

Putting Contest Sponsor

DOREEN & FRED SOLOMON

Cool Sponsor

ELLEN & RICHARD SANDLER

Tee & Hole Sponsors



ATLANTIC OPTIC
THE LAW OFFICE OF ALLAN D. SARVER

DIANE & PAUL MOHILEF
THE TARNOL ADVISORY GROUP, INC.

DESLEY & STEVE RAPAPORT
THE TARNOL ADVISORY GROUP, INC.



Tee Sponsors

MATT & HELEN HERMAN

LYNN & BRUCE KAUFMAN



THE MATLOFF TEAM
OFFICE OF BRANDON MATLOFF, CLTC
A WEALTH MANAGEMENT FIRM



MICHAEL RESNIK



GEORGE SUGARMAN
BRUCE A. HATKOFF

NANCY & AL WEINER

Hole Sponsors



KAREN MORIN GREEN & CASEY GREEN

EARL GREINETZ



BARBARA GOTTLIEB & STUART GROSS

IRA WOLOWITZ INSURANCE







2013 Golf Committee:

Ira Halpern, co-chair
Harvey Turell, co-chair
Allan Sarver
Bruce Kaufman
David Feldman
Gary Ross
Herb Greenman

Ian Gilbert
Marilyn Alper
Michael Resnick
Mike Drake
Norm Epstein
Sandy Rosenholz











THE EXECUTIVES

SFV Support Group for the Los Angeles Jewish Home



Sunday, February 9, 2014 at 11:00 am

Warner Center Marriott

21850 Oxnard St, Woodland Hills, CA 91367

More information call 818-774-3331 or email saul.korin@jha.org

\$65 for members of The Executives

\$80 for nonmembers (event is free if you join for \$150).

Women's Networking Event

with featured speaker Dr. Janet Woods and HidiLee.com fashion show



Dr. Janet Woods

Dr. Janet Woods is an internationally recognized expert in the art of Chinese Face Reading and non-verbal communication. As Founder and President of the Art of Life, she has conducted over 12,000 consultations and appeared on numerous radio shows.

Dr. Janet has also appeared on CBS, KCAL News and a variety of cable shows. Her internet radio show, "A Notable Life" is a local favorite on iTunes.

Through her Face Reading courses, Dr. Janet teaches audiences of all business backgrounds how to instantly "read" a person, predict their behavior and understand where they are coming from. She helps her students to understand a person's body language in order to bolster the sales process and close more deals.

Dr. Janet's professional mission is to help people flourish in life and business by utilizing Face Reading as a catalyst for manifesting positive change. She is on staff at Cerritos Community College, is a board member of the School of Multidimensional Healing Arts and Sciences, the director of the Art of Life Institute, and is the president of the Feng Shui Professional Association.



Hidi Lee

Imagine standing in front of the mirror and completely in love with what you see! Hidi Lee can help you with that.

She is a lingerie designer with 24 years of international experience.

She is also an author of "Almost Naked - Lingerie, Secret of the Guilty Pleasure" and "Sexy with No Boundaries - Discover the Art of being sexy - Mentally, Physically and Professionally".

She is also a motivational speaker. She co-host "The Naked Truth Workshop - An event that redefines sensuality and breaks through false body perceptions"

She is also the founder of "To Be Your Own Image Consultant - Discover Your Own Fashion DNA"

www.HidiLee.com



facebook.com/LAJewishHomeExecutives



[@LAExecutives](https://twitter.com/LAExecutives)

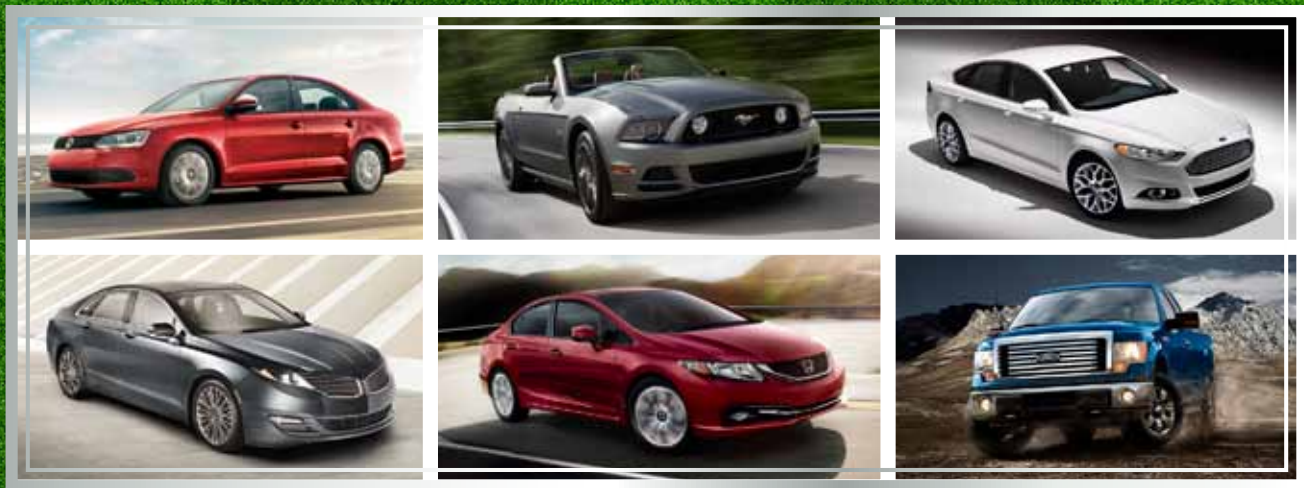


linkedin.com/groups/Executives-Los-Angeles-Jewish-Home-66211

www.TheExecutives.org



EXECUTIVES 10TH ANNUAL GOLF CLASSIC



CONVENIENTLY LOCATED AT 15505 ROSCOE BLVD.
IN THE HEART OF THE SAN FERNANDO VALLEY



FOR ALL YOUR AUTOMOTIVE NEEDS, PLEASE CONTACT TONY
DEMAIO, GALPIN MOTORS BUSINESS DEVELOPMENT
COORDINATOR, AT TD@GALPIN.COM OR (818) 233-5357.

1-800-GO-GALPIN • WWW.GALPIN.COM



www.mff.org

We are proud to support
The Executives
and the
Los Angeles Jewish Home
and wish you
continued success in
your important work



**MILKEN FAMILY
FOUNDATION**

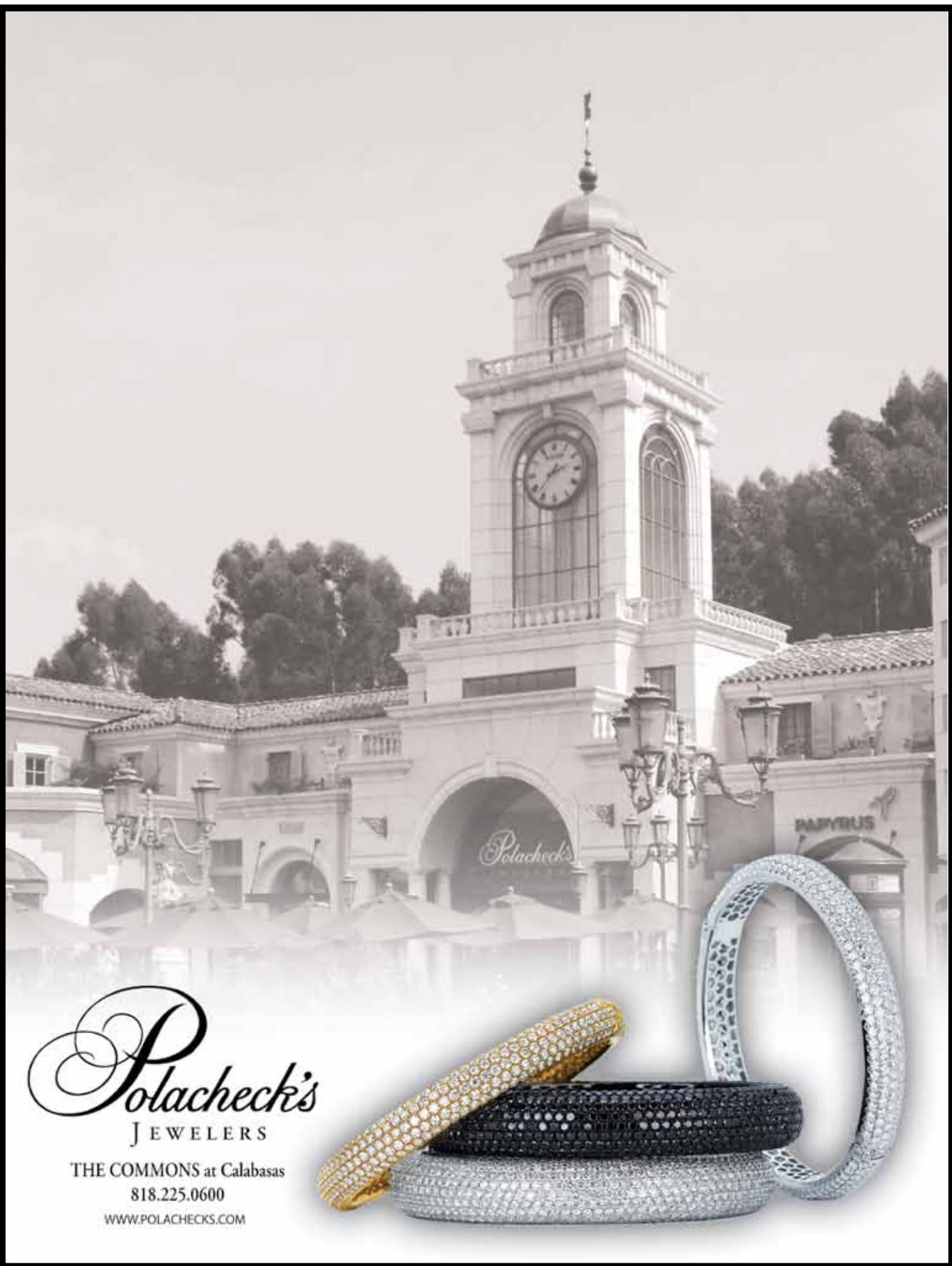
Leading Advances in
Education and Medical Research



PROUD SUPPORTER OF

The Executives 10th Annual Golf Classic





Polacheck's
JEWELERS

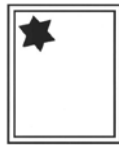
THE COMMONS at Calabasas
818.225.0600

WWW.POLACHECKS.COM

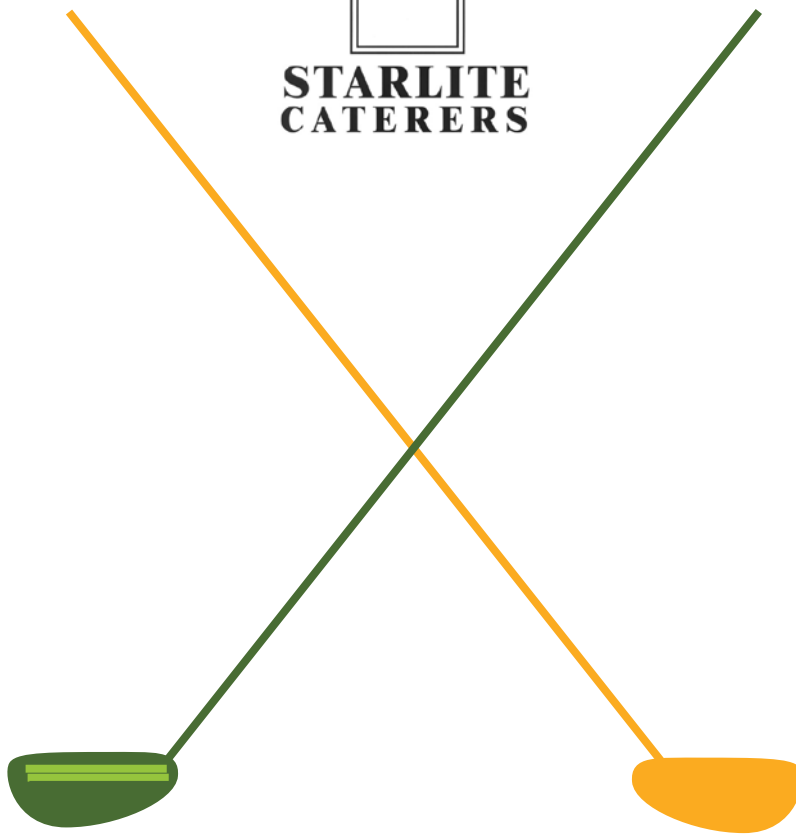
**Lynn and David Feldman
are happy to support
The Executives and
those who give their time
and efforts to the benefit
of the Home.**

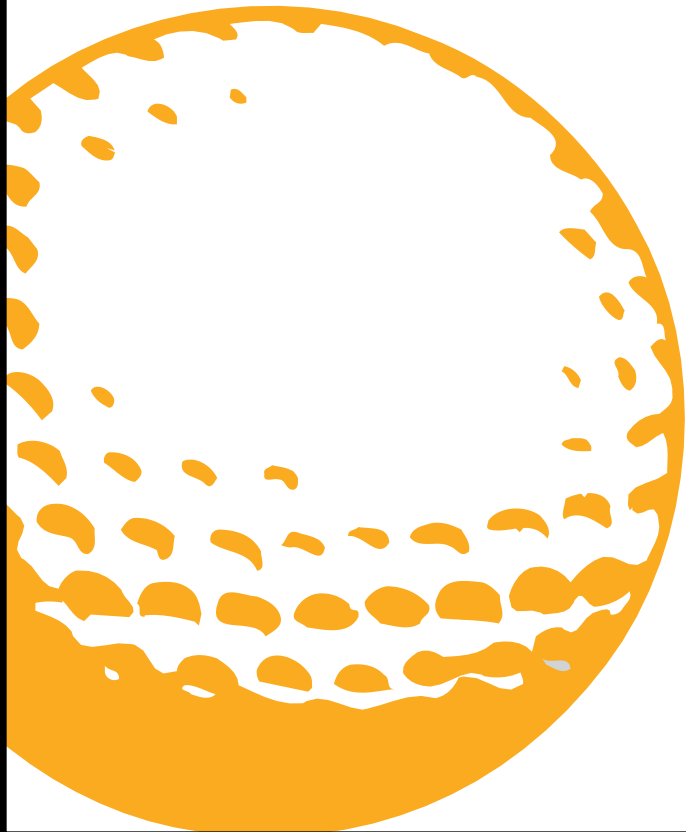


**We are proud
to support
The Executives
on its
10th Annual Golf Classic
Congratulations!**



**STARLITE
CATERERS**





Gary Mintz
Proudly Supports
The Executives

**Mazal tov to the golfers
and the committee on a wonderful
day supporting The Executives and
the Los Angeles Jewish Home.**

Fred and Doreen Solomon





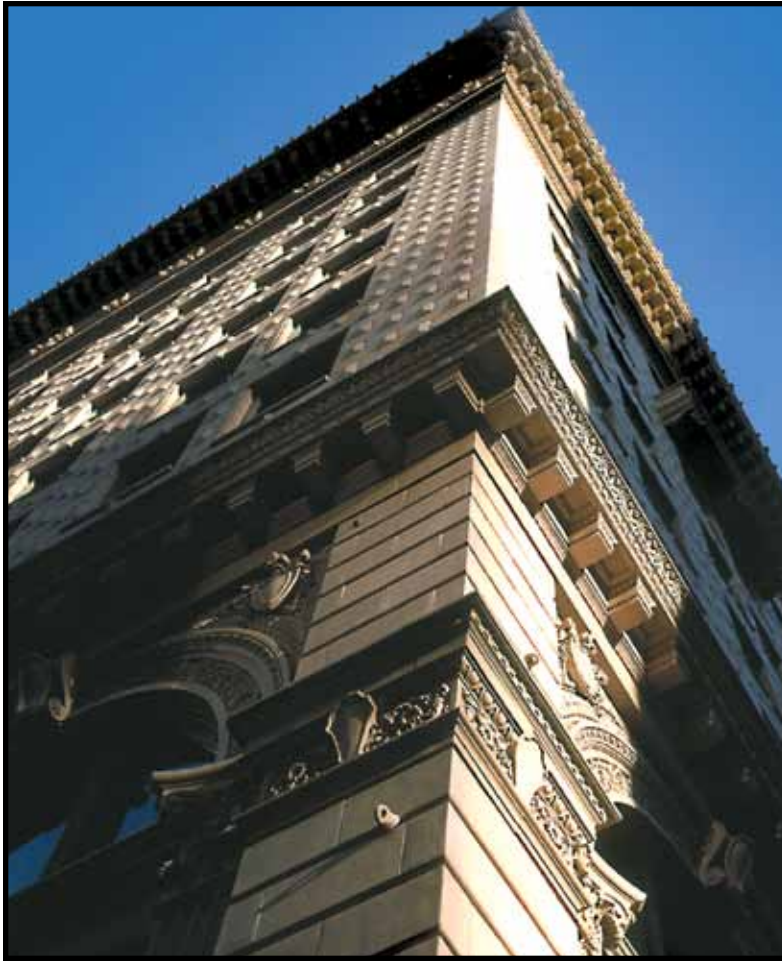
EXCELLENT PROGRAM,
WORTHY CAUSE,
SERVING THE COMMUNITY,

CHUCK TREIBATCH



**Congratulations on a
great tournament and
all the support you
give to the residents
of the Los Angeles
Jewish Home.**

Karen and Neal Dem



Built on a
foundation
of trust *and*
stability.

AMERICAN BUSINESS BANK®

Member FDIC

www.americanbusinessbank.com

LOS ANGELES | ORANGE COUNTY | INLAND EMPIRE | SAN FERNANDO VALLEY | SOUTH BAY

We are proud to support the wonderful work of
THE EXECUTIVES
Congratulations on your outstanding achievements and
contributions to the Los Angeles Jewish Home

Lon and Rocky Morton





Pocrass & De Los Reyes is a leading plaintiff law firm that obtains excellent results for its clients.

- **\$4.5 Million Verdict** for a **Helicopter Accident**
- **\$3.3 Million Verdict** for a **Construction Accident**
- **\$2.8 Million Settlement** for a **Burn Injury** due to a **Defective Product**
- **\$2.5 Million Settlement** for a **Wrongful Death** due to a **Truck Accident**
- **\$2.3+ Million Settlement** for a **Bicycle Accident**
- **\$2.3 Million Settlement** for a **Pedestrian** in a **Car Accident**
- **\$1.4 Million Settlement** for a **Motorcycle Accident**
- **\$1.2 Million Verdict** for **Injuries** in a **Golfing Accident**
- **\$450,000 Verdict** for a **Trip-and-Fall**
- **\$250,000 Settlement** for a **Dog Bite**

Proud Supporter of:

The Guardians, Jewish Home for the Aging

Rotary Club of Beverly Hills

Los Angeles County Bicycle Coalition



POCRASS & DE LOS REYES LLP
www.pocrass.com | Attorneys

FREE CONSULTATION 1875 Century Park East, Suite 1750, Los Angeles, CA 90067 P: 310.550.9050 E: info@pocrass.com

Many Thanks
to the Committee.
Your commitment
was awesome.

Susan and Ira Halpern





Nancy & Rick Katz
Celebrate
The Executives
and the
Los Angeles
Jewish Home

**PROUD SUPPORTER OF
THE 10TH ANNUAL GOLF CLASSIC**

Ira Wolowitz
Ira Wolowitz Insurance

**3702 Paseo Primario
Calabasas, CA 91302
iwins@pacbell.net
tel: 818-222-5711
fax: 818-222-5712
mobile: 818-730-2462
LIC. #0422881**

Insure Your Children's Future

**We're proud
to support the
Jewish Home and
The Executives
10th Annual
Golf Classic**

Lynne & Jeff Lainer

**To Ira's Hole in One!
Love!
Diane & Paul Mohilef**

**THANK YOU
TO
THE EXECUTIVES
FOR YOUR
CONTINUED SUPPORT
OF THE
LOS ANGELES JEWISH HOME**

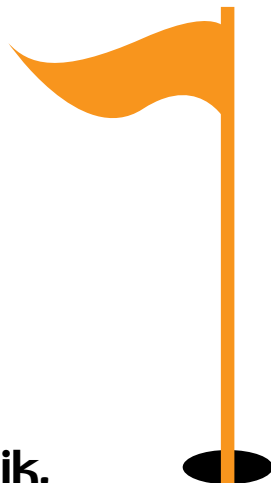
**MAY YOUR
10TH ANNUAL GOLF CLASSIC
BE A SWINGING SUCCESS!**

YOUR FRIENDS
Rosenheim & Associates, Inc.
**R&A I
N C.**
Land Use Entitlement Consultants
www.raa-inc.com



**Michael Resnik,
Financial Planner**

4312 Woodman Ave. Ste 200
Sherman Oaks, CA 91423
(818) 501-9922
Michael.Resnik@natplan.com
premierfinancialconsultants.net



**Congratulations to
Herb Greenman
and the Golf
Committee on
a fabulous day
supporting the
residents of
the Los Angeles
Jewish Home.**

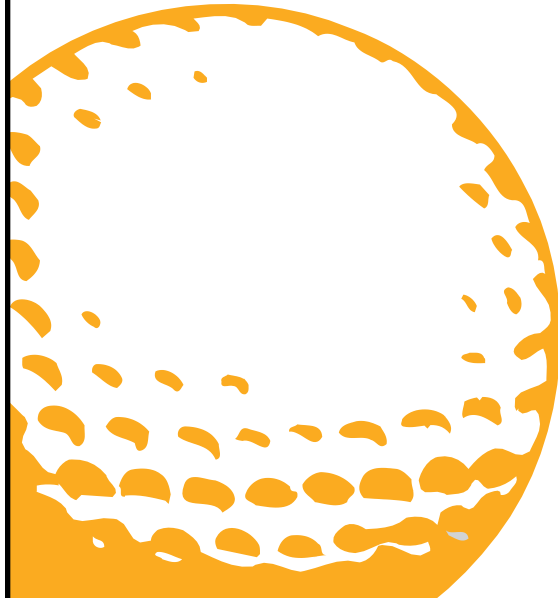
**The Tarnol Advisory Group
tarnolgroup.com**

Mazal tov to
all the golfers
who support
the Los Angeles
Jewish Home

Jacqueline and Ron Feder

**Mazal tov to
all the golfers and committee
on a wonderful day supporting
the Los Angeles Jewish Home.**

Nancy & Al Wiener



GNW  **EVERGREEN**
INSURANCE SERVICES, LLC

**is a Proud
Supporter of
the Los Angeles
Jewish Home**



License Number#: 582760

We are a General Commercial/Residential Contractor

We have been in business since 1989

We provide the following services:

- Janitorial Services
- Healthcare/Hospital Support Services
- Mold Remediation & Reconstruction
- HVAC Cleaning
- Manufacturing/Industrial Cleaning

Our Construction Division provides the following services:

- Commercial/Retail/Public Works Construction
- Project Management

Please contact us for a free estimate

Toll Free 1-800-698-6668

Phone #:562-616-1020

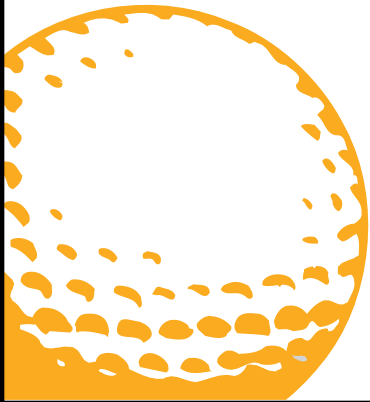
Fax #: 562-616-1028

6101 Obispo Avenue, Long Beach, CA 90805

www.midaindustries.com

**You hit a hole in
one today...
Mazal tov to the
Golf Gommittee and
The Executives**

Earl Greinetz



**Barbara Gottlieb
and Stuart Gross
Celebrate
The Executives and
the Jewish Home.**

**Congrats on
a great day!**

**Golf can put a smile
on your face!
Mazal tov to
The Executives!**

**\$150 for digital X-rays,
exam, regular cleaning
and whitening.**

**Daniel Hemmati, DDS
Comprehensive Restorative Dentistry
4955 Van Nuys Boulevard
Sherman Oaks, CA 91403
Phone: (818) 784-6145
mydentist.shermanoaks@yahoo.com**

**Proud Sponsor
LAW OFFICES
OF HATKOFF &
MINASSIAN**

**818-990-5180
SERVING YOUR
COMMERCIAL COLLECTIONS,
CREDITOR-DEBTOR AND
REAL ESTATE NEEDS**

Proud Supporter of
**The Executives
10th Annual
Golf Classic**

Matthew Herman



**Congratulations to all on
a wonderful tournament**

Lynn and Bruce Kaufman

Proud Supporter of
**The Executives
10th Annual
Golf Classic**

Anonymous

Proud Supporter of
**The Executives
10th Annual
Golf Classic**

Brian Minkow/Prospect

Proud Hole Sponsor of
**The Executives
10th Annual
Golf Classic**

GREG OFFSAY



Proud Supporter of
**The Executives
10th Annual
Golf Classic**

Desley & Steve Rapaport

What a day!
Congratulations to
the winners, the golfers,
the committee and
The Executives.

Allan D. Sarver

A day in the sun
supporting the
residents in their
sunset years!!
Congrats on a
wonderful day.

George and Susan Sugarman

**We congratulate
Martini, Iosue & Akpovi
for their contribution to
the community and the
Los Angeles Jewish Home!**

Salud!!

Carole and Rick Flam



**To Herb Greenman -
Congratulations on the
Tournament.**

Darriel and Ron Gerson



JACK SCHLAIFER Commercial Real Estate Services

3835R E. Thousand Oaks Blvd. • Suite 308 • Westlake Village, CA 91362
Telephone: (805) 493-5592 • Fax: (805) 492-6584

Email: jack@jscres.com License ID# 00297759

**Susan and Ira Halpern,
Many thanks for the good work
you do for the Jewish Home**

Love,
Mom Dorothy

THE EXECUTIVES

SFV Support Group for the Los Angeles Jewish Home



**10TH ANNUAL
POKER TOURNAMENT⁺
NO-LIMIT TEXAS HOLD'EM**

SUNDAY, MARCH 2, 2014

BRAEMAR COUNTRY CLUB

4001 Reseda Blvd. | Tarzana, CA 91357-5330

Must Be 21 Years Or Older



SIGN UP ONLINE:

[https://community.jha.org/
executivespokertournament2014](https://community.jha.org/executivespokertournament2014)

**Sharon J. Udkoff, CPA
sjudkoff@yahoo.com
818 980-5996**

BITTONDESIGN
group

HOSPITALITY DESIGN

www.bittondesign.com

SAY IT WITH A Tribute

Get Well

Arlene Bloom

Gail & Sy Silverstein and Family

Rick Flam

The Executives

Debra Greenberg

The Executives
Gail & Sy Silverstein and Family

Michael Grobstein

Lee, Arlene, Brett and Scott Alpert
The Executives
Jill & Fred Gaines
Joanah & Robb Greenspan
Wendy & John Moskal
Sidney & Allen Rishe
Margaret & Jack Schlaifer
Sharon Udkoff

Nancy Katz

The Executives
Gail & Sy Silverstein

Sue Kassner

The Executives

Chuck Lipeles

The Executives
Debra & Arthur Greenberg
Gail & Sy Silverstein

Rich Marcus

The Executives

Amy Regenstein

The Executives
Lynn & Bruce Kaufman
Sidney & Allen Rishe
Margaret & Jack Schlaifer
Michele Zwilling

Jessica Supowitz

The Executives

Happy Birthday

Michael Antin

Happy 75th Birthday
Susan & Howard Loeb

Dr. Fred Edelman

Happy 80th Birthday
Carole & Rick Flam

Toni Erlich & Rueben Erlich

Happy Birthday
Carole & Rick Flam

Jim Felton

Happy Birthday
Deb & Arthur Greenberg

Jenna Leaf

Happy 14
Sylvia & Corey Leaf

Ellen Levine

Special Birthday
Margaret & Jack Schlaifer

Gary Mintz

Happy Birthday
Deb and Arthur Greenberg

In Honor Of

Earl Greinetz

Helen & Ian Smith

Susan & Ira Halpern

Nancy & Dave Meshulam

Bob Hirsch

Helen & Ian Smith

In Memory Of

To Marla Abraham

In memory of mother
Saul Korin & The Executives

To Richard Aronoff

In memory of mother
The Executives

To Joann Bauer and Family

In memory of husband and father, Rudy
Carol & Burt Haaz

To Family of Nettie Berkson

In memory of Nettie Berkson
William Jacobs

To Marlene and Neal Brostoff

In memory of Lou Gitterman
Joy & Gerry Picus

To Martin Carmen and Family

In memory of mother
Carol Haaz

To Diana Dabach and Family

In memory of Ahuva Dabach
The Executives

To Larry Ellis

In memory of wife, Irene
Carol & Burt Haaz

In memory of Raymond Freedman

Sheila & Norman Arons

To Gabbai Family

In memory of Sister and Aunt
The Greenberg Family

To Alan Gabriel and Family

In memory of wife, mother and grandmother, Linda Gabriel
Gail & Sy Silverstein

To Candy and Howard Gastwirth

In memory of Morris Gastwirth
Wendy & Mel Kohn

To Phyllis Gitterman and Family

In memory of Lou Gitterman
Joy & Gerry Picus

To Sherry Gold and Family

In memory of David Gold
The Executives

To Bill Goldsmith and Family

In memory of father, Charles Goldsmith
Debra & Arthur Greenberg

To Ben Greenberg and Family

In memory of Jan Greenberg
Joy & Gerry Picus

To Al Hirsch

In memory of Nita Hirsch
Linda & David Silverstein

To Bob Hirsch and Family

In memory of wife, Nita Hirsch
The Executives
Bruce Bernard
Sharon & Elliott Friedman
Jill & Fred Gaines
Carole Glodney
Debra & Arthur Greenberg
Earl Greinetz
Sue & Frank Hickman
Karyn Palmer
Alice Podokshik & Sasha Ezros
Rosenheim & Associates, Inc.
Margaret & Jack Schlaifer
Gail & Sy Silverstein
Linda & David Silverstein
Joani & Shelly Steier

To Carolyn Levin

In memory of husband, Marvin Levin
Joan & Dave Levinson

To Mr. & Mrs. Julian Levin

In memory of father, grandfather & great-grandfather, Isador Levin
Gail & Sy Silverstein

To Lou Levine and Family

In memory of husband, Irv Levine
Joy and Gerry Picus

To Phyllis & Dr. Alan Licht

and the Licht Family
In memory of Dr. Robert Licht
Joy & Gerry Picus

To Stuart & Tillie Markman and Family

In memory of father, Ben Markman
Carol & Burt Haaz

To Audrey & Brian Milman

In memory of Gary Milman
Barbara & Russ Lipkin

To Corinne Moore and Family

In memory of beloved mother
Carol Haaz

To Nora, Jay and Meridith Ross

In memory of daughter and sister, Mallory
Carol Haaz

To David Rothstein and Family

In memory of wife, mother and grandmother, Ellen
Carol & Burt Haaz
Bubbles Singer

To Helen Rubinstein

In memory of Bella Rubinstein
Marilyn Weiss Alper

To Mr. & Mrs. David Saltman

In memory of sister, Melissa Meyer
Judy & Allan Whitman

To Joel Saltzburg and Family

In memory of wife, Susan Saltzburg
Carole & Rick Flam
Nancy & Rick Katz

To Marietta Schwartz

In memory of husband, Ray
Bubbles Singer

To Janis & Yoram Shein

In memory of Lillian Goldberg
The Executives
Ann Bose
Doreen Kayne

To Beverly Shore & Family

In memory of Joe Shore
Joy & Gerry Picus

To Joan & Jerry Shubb and Family

In memory of father
Carol & Burt Haaz

To Julie Singer and Family

In memory of mother
Bubbles Singer
Carol & Burt Haaz

To Mary Singer & Family

In memory of brother
Bubbles Singer

To Ron Slates

In memory of mother, Gerta Slates
The Executives
Barbara Thompson

To Judy Stern

In memory of husband, Monty Stern
Sharon & Elliott Friedman

To Bruce Stone

In memory of mother, Shirley Stone
The Executives

To Allen & Sheri Tuchman

In memory of Linda Schneit
Ken & Sue Goldman

To Sharon Udkoff

In memory of David Gold
The Executives

To Kenneth Weinbaum & Family

In memory of mother
Harriet Brittan

To Mr. and Mrs. Ron Weiss & Family

In memory of Marty Weiss
Francine Oschin

To Barry West

In memory of Sheila West
Nancy & Rick Katz

To Sheila Yancy

In memory of husband, Clay
Carol & Burt Haaz

To Larry Zide and the Zide Family

In memory of mother, Arlene Zide
Margaret & Jack Schlaifer

Mazel Tov

Bob Adelman

Birth of grandson, Nolan
Debra & Arthur Greenberg

**Arlene & Lee Alpert
Nancy Velasquez &
Scott Alpert's Wedding**

The Executives
Jill Banks Barad & Ross Hopkins
Margaret & Jack Schlaifer

**Brett Alpert, Arlene & Lee Alpert
Brett Alpert Receiving Doctor of
Philosophy in Higher Education from
the University of Michigan**

Margaret & Jack Schlaifer

Donald Doner

*On 22 Years of Service as a Mentor at
SCORE*

Sandy Miller

Honorable Fred Gaines

*On being sworn in as the
Mayor of Calabasas*

Lee, Arlene, Brett and Scott Alpert
Debra & Arthur Greenberg
The Executives
Wendy & Mel Kohn
John & Wendy Moskal
Sidney & Allen Rishe
Margaret & Jack Schlaifer

Pam & Burt Gelman

50th Anniversary
Carole & Rick Flam

Rebecca Goldfarb

*On Goldfarb & Luu being recognized
as a Rising Star for 2013 by The New
York Times & Los Angeles Magazine,
Super Lawyers*

Carol Haaz

Joyce & Eric Goldman

50th Anniversary
Susan & Howard Loeb

**Debra & Arthur Greenberg
Birth of grandsons, Gavin Jonah and
Dylan Henry Schwartz**

The Executives
Marsha & Len Cohen
Jill & Fred Gaines
Carol & Burt Haaz
Doreen & Paul Kayne
Wendy & Mel Kohn
Margaret & Jack Schlaifer
Leah Buturain Schneider & Ed Schneider
Maya Shulman & Bob Adelman
Laurie & Joel Volk

Barrie & Michael Grobstein

50th Wedding Anniversary
Mickey Kommel

Gary Kendall

*Daughter, Taylor Ashley Kendall's
Bat Mitzvah*

The Executives
Ann Bose
Adam Gauthier
Janis Shein
Shelly Steier

Saul Korin

*On being inducted as
President of JCPSC*

Cheryl Kater
Marcee Weiss

Mr. & Mrs. Leon Lewitt

50th Anniversary
Carole & Rick Flam

**Sarah and Brandon Matloff
Birth of daughter, Stella Dorothy
Matloff**

The Executives
Britney Greenberg
Gary Krausz
Margaret & Jack Schlaifer

**Linda & Paul Matloff
50th Wedding Anniversary**

Nancy & Rick Katz

Alice Podokshik & Sasha Ezros

Newly Married
The Executives
Corinne Berenson
Ann Bose
Fred Gaines
Britney Greenberg
Larry Schechter
Margaret & Jack Schlaifer

Phyllis Winger

*Son, LAPD Sergeant Douglas Winger,
received Z Award for "Exzellence"*
The Executives

THANK YOU

Hal Goldstein

Shelly Levy

Brandon Matloff & Elliot Matloff

The Executives

Pastries by Edie

For Ray's 100th Birthday Cake
Judi & Allan Whitman

MISC.

Mr. and Mrs. Jack Caya & Family and

Gerry & Family
*Happy, Healthy Holidays and
New Years*
Sylvia & Corey Leaf

Mr. & Mrs. Froch and Family

*Happy, Healthy Holidays
and New Years*
Sylvia & Corey Leaf

Mr. & Mrs. Scott Harris and Family
*Happy, Healthy Holidays
and New Years*
Sylvia & Corey Leaf

Mr. & Mrs. Neil Hattem and Family

*Happy, Healthy Holidays
and New Years*
Sylvia & Corey Leaf

Mr. Jules and Jodi Karp

*Happy, Healthy Holidays
and New Years*
Sylvia & Corey Leaf

Mr. & Mrs. Mark Leaf, Jenna and Tyler

*Happy, Healthy Holidays
and New Years*
Sylvia & Corey Leaf

Mr. Lenny and Mike Samuels

*Happy, Healthy Holidays
and New Years*
Sylvia & Corey Leaf

Mrs. Marjorie Schwartz and family

and Jerry Greenberg and family
*Happy, Healthy Holidays
and New Years*
Sylvia & Corey Leaf

Mr. & Mrs. LJ Sherman

and Family and Pets
*Happy, Healthy Holidays
and New Years*
Sylvia & Corey Leaf

Mrs. Virginia Spira

*Happy, Healthy Holidays
and New Years*
Sylvia & Corey Leaf

Mr. & Mrs. Charles Winner and Justin,

Cecilia and Mimi and Family
*Happy, Healthy Holidays
and New Years*
Sylvia & Corey Leaf



Breakfast with The Executives with featured speaker
Dr. Sara Hurvitz
*Cutting-Edge Therapies For Breast Cancer:
Hope Becomes Reality*

Thursday, March 6, 2014

7:00 - 7:30 am Social Time | 7:30 - 9:00 am Program

El Caballero Country Club
18300 Tarzana Drive, Tarzana

Members:

\$25 pre-registered
\$30 at the door

Non-Members:

\$30 pre-registered
\$35 at the door

RSVP BY FEBRUARY 28TH | FOR MORE INFORMATION: (818) 774-3331



Holwick Constructors is a proud sponsor of The Executives Poker Tournament and a supporter of the Los Angeles Jewish Home.



For over 100 years, the nonprofit Los Angeles Jewish Home has provided quality care for seniors. Through its community-based, in-your-home, and residential services, the Home offers comprehensive care to meet every level of senior healthcare needs. These services include the Brandman Centers for Senior Care (BCSC), the Home's Program of All-inclusive Care for the Elderly (PACE), Skirball Hospice, palliative medicine, home health care, and personal care services, as well as independent living accommodations, residential care, skilled nursing care, short-term rehabilitative care, acute psychiatric care, and Alzheimer's disease and dementia care. The Home recently announced plans to build the Gonda Healthy Aging Westside Campus in Playa Vista.

A Winning Foursome



The physicians, nurses and staff of Mission Community Hospital provide comprehensive, quality healthcare, supported by the advanced technology you need, when you need it.

All of this is brought to you with compassion, kindness and dignity—
just what you would expect for yourself and your loved ones.

We're also proud to be a sponsor of The Executives 10th Annual Golf Classic and advocate for the outstanding community services of the Los Angeles Jewish Home.



14850 Roscoe Blvd · Panorama City, CA 91402 · 818.787.2222 · www.mchonline.org

Mission Community Hospital is owned and operated by Deanco Healthcare, LLC

THE EXECUTIVES

SFV Support Group for the Los Angeles Jewish Home



7150 Tampa Avenue
Reseda, CA 91335

Non-Profit Org.
US Postage
Paid
Addressers

Save the Date...

BREAKFAST WITH
PROF. EDWARD LEAMER
El Caballero Country Club
Tarzana
January 9, 2014 at 7 am

WOMEN'S
NETWORKING EVENT
and HidiLee.com Fashion Show
Warner Center Marriott
February 9, 2014 at 11 am


10TH ANNUAL
POKER TOURNAMENT
Braemar Country Club
Sunday, March 2, 2014
at 11 am

The Executives is
the San Fernando Valley
Support Group for the
Los Angeles Jewish Home
www.TheExecutives.org



 facebook.com/LAJewishHomeExecutives

 [@LAExecutives](https://twitter.com/LAExecutives)

 linkedin.com/groups/Executives-Los-Angeles-Jewish-Home-66211

Want to receive The Executives' monthly eNewsletter? E-mail executives@jha.org or call (818) 774-3331